

# Welcome to the East Area Planning Committee

- This planning committee meeting is held in public, but it is not a public meeting.
- There will be opportunity for the public to address the committee on each application.
- If you wish to speak for or against a planning application, you will need to have either requested it in advance, or fill out and hand in one of the available speaker forms.
- Information on meeting protocol and conduct at committee is set out in the Code of Practice.
- You can find a copy of the Code of Practice in the committee agenda, just before the first planning application report.

[www.oxford.gov.uk](http://www.oxford.gov.uk)





35

Entrance to Temporary Car Park





Temporary Car Park Looking North



Temporary Car Park Looking South



38

Current Temporary Buildings On Site



39

Temporary Building To Be Renovated and Retained



40

Temporary Buildings To Be removed





41

Pedestrian & Cycle Path To Old Road; Steps to Site of New Temporary Buildings



Pedestrian & Cycle Path From Old Road

**Old Road Campus**

**Index**

- Buildings
- Paths
- Landmarks
- Amenities
- Services
- Transport
- Security
- Other

**Getting Here, Ask Delivery**

- From the Main Campus
- From the Old Road
- From the South
- From the North
- From the East
- From the West

**Opening Hours**

- Monday - Friday: 9:00am - 5:00pm
- Saturday: 10:00am - 4:00pm
- Sunday: Closed

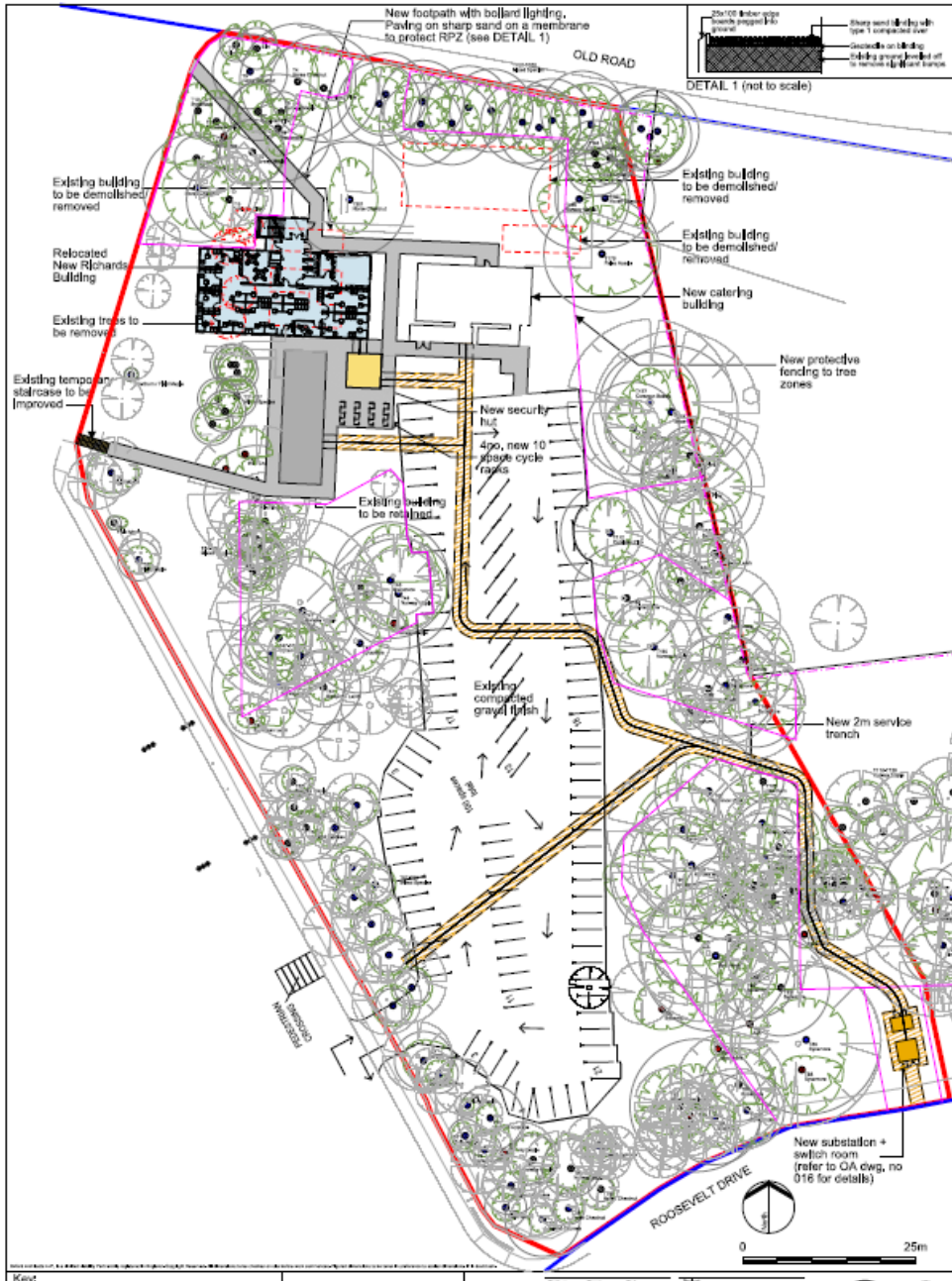
**Contact Us**

- Phone: 01234 567890
- Email: info@oldroadcampus.org
- Website: www.oldroadcampus.org

**QR Code**

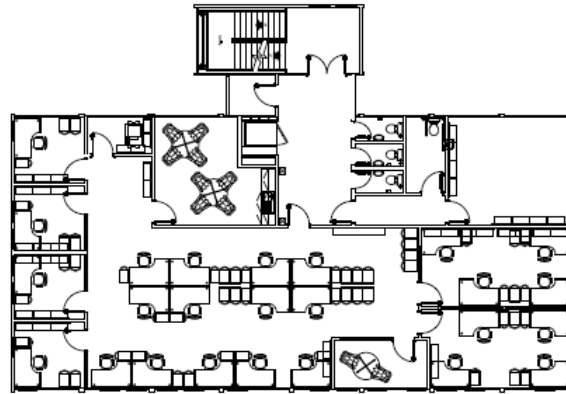
# Site As Proposed

43

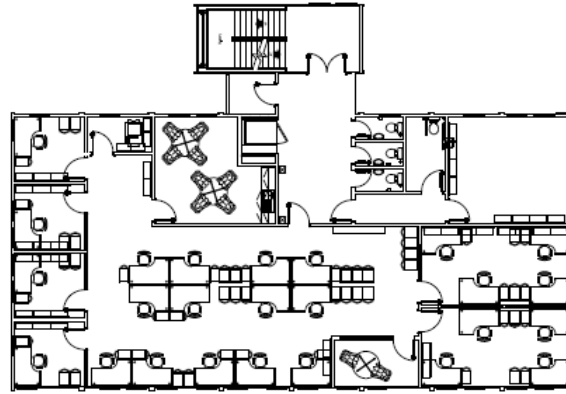


# Floor Plans To Temporary Offices

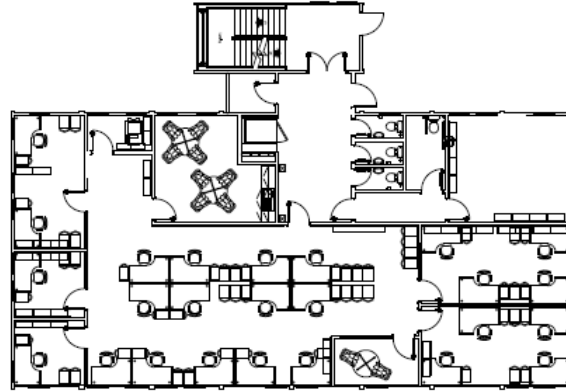
44



PROPOSED SECOND FLOOR PLAN



PROPOSED FIRST FLOOR PLAN



PROPOSED GROUND FLOOR PLAN



Rev	Date	By	Reason
A	20/05/14	AW	Rev changed to be A1, second floor plan added
Partner	Drawn	Date	
CW	AW	MAY 2014	

Status  
**PLANNING**

Scale  
1:100 @ A1

Project  
New Richards Building  
University of Oxford

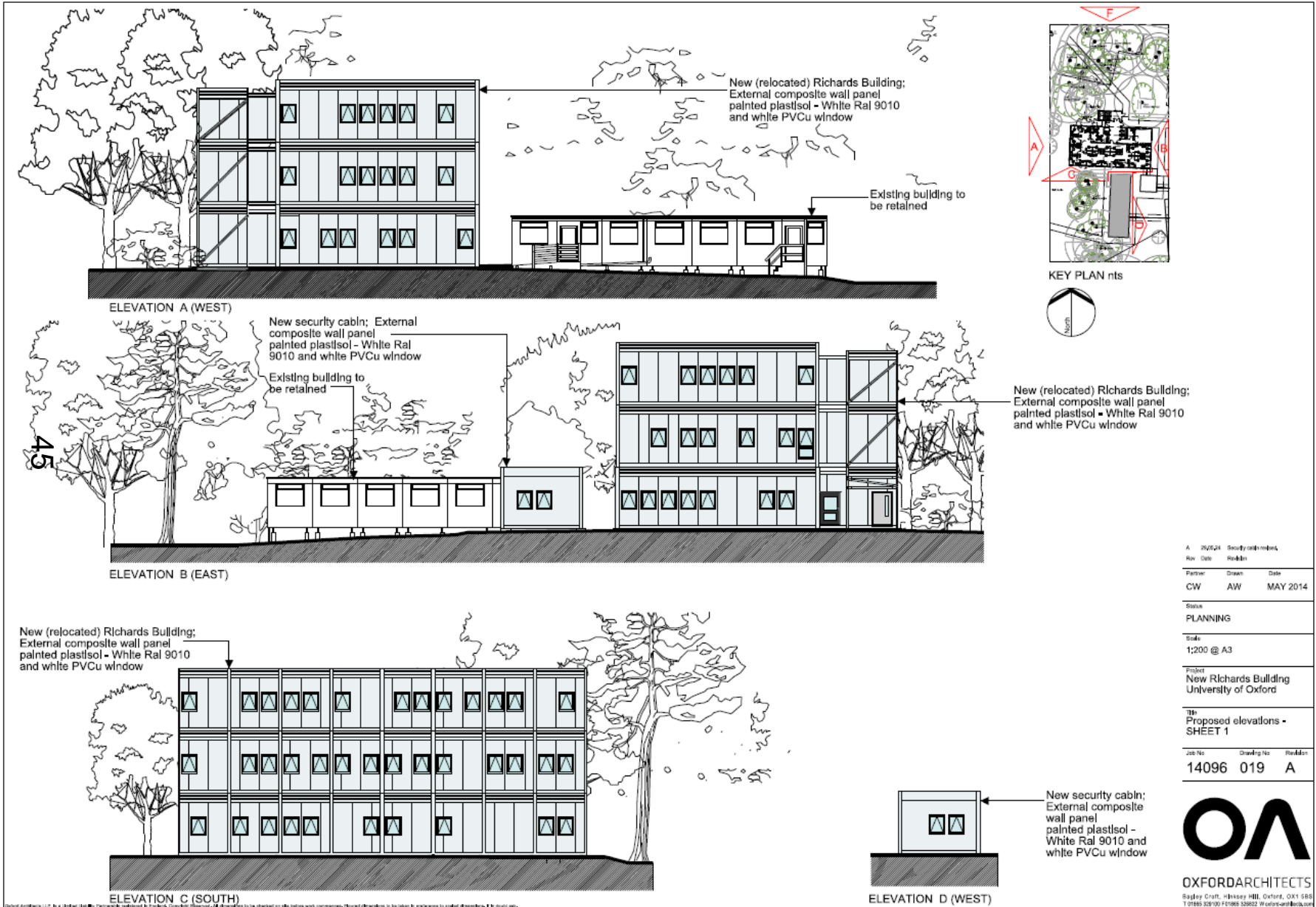
Title  
New Richards building  
Proposed plans

Jan No	Drawing No	Revision
14096	014	A



**OXFORDARCHITECTS**  
Bagley Croft, Hinksey Hill, Oxford, OX1 5BS  
T 01865 324100 F 01865 320622 W [www.oxfordarchitects.com](http://www.oxfordarchitects.com)

# Elevations To Temporary Offices



A. 25/2/14 Security cabin details		
Rev.	Date	Revision
Partner	Drawn	Date
CW	AW	MAY 2014
Status		
PLANNING		
Scale		
1:200 @ A3		
Project		
New Richards Building University of Oxford		
Title		
Proposed elevations - SHEET 1		
Job No.	Drawing No.	Revision
14096	019	A

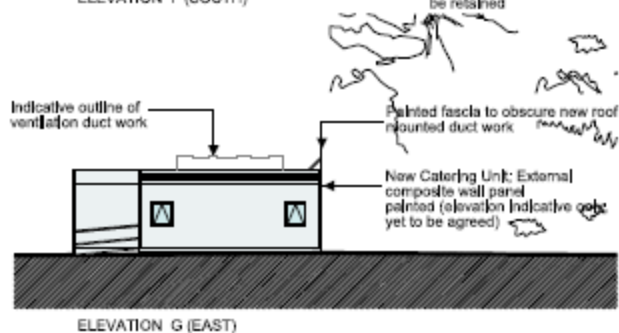


**OXFORDARCHITECTS**  
 Bayley Court, Honey Hill, Oxford, OX1 5BB  
 T 01865 329100 F 01865 328822 [www.oxfordarchitects.com](http://www.oxfordarchitects.com)

# Elevations to Temporary Offices



46



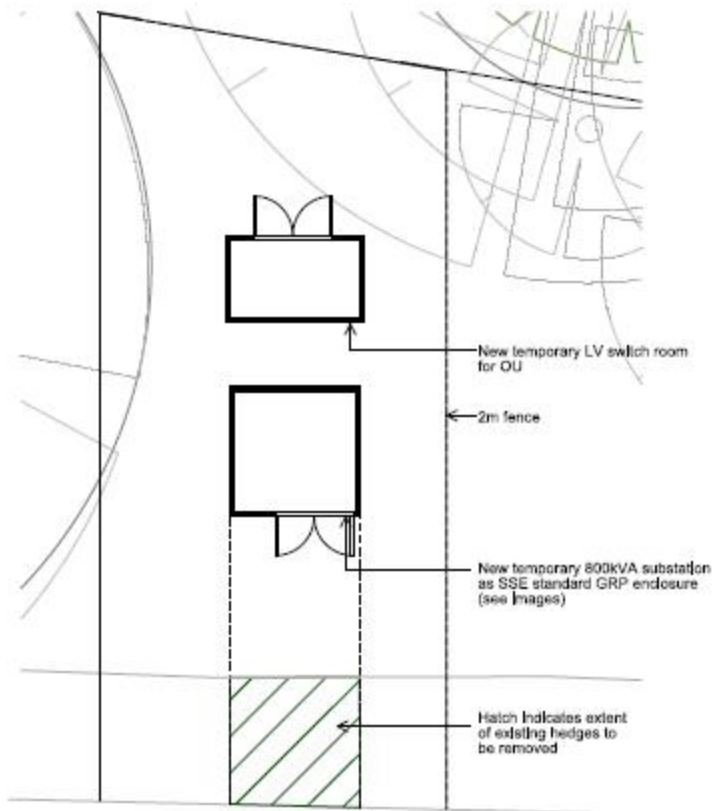
No.	Date	Issue
1		Issue for Planning
2		Issue for Planning
3		Issue for Planning
4		Issue for Planning
5		Issue for Planning
6		Issue for Planning
7		Issue for Planning
8		Issue for Planning
9		Issue for Planning
10		Issue for Planning
11		Issue for Planning
12		Issue for Planning
13		Issue for Planning
14		Issue for Planning
15		Issue for Planning
16		Issue for Planning
17		Issue for Planning
18		Issue for Planning
19		Issue for Planning
20		Issue for Planning
21		Issue for Planning
22		Issue for Planning
23		Issue for Planning
24		Issue for Planning
25		Issue for Planning
26		Issue for Planning
27		Issue for Planning
28		Issue for Planning
29		Issue for Planning
30		Issue for Planning
31		Issue for Planning
32		Issue for Planning
33		Issue for Planning
34		Issue for Planning
35		Issue for Planning
36		Issue for Planning
37		Issue for Planning
38		Issue for Planning
39		Issue for Planning
40		Issue for Planning
41		Issue for Planning
42		Issue for Planning
43		Issue for Planning
44		Issue for Planning
45		Issue for Planning
46		Issue for Planning
47		Issue for Planning
48		Issue for Planning
49		Issue for Planning
50		Issue for Planning
51		Issue for Planning
52		Issue for Planning
53		Issue for Planning
54		Issue for Planning
55		Issue for Planning
56		Issue for Planning
57		Issue for Planning
58		Issue for Planning
59		Issue for Planning
60		Issue for Planning
61		Issue for Planning
62		Issue for Planning
63		Issue for Planning
64		Issue for Planning
65		Issue for Planning
66		Issue for Planning
67		Issue for Planning
68		Issue for Planning
69		Issue for Planning
70		Issue for Planning
71		Issue for Planning
72		Issue for Planning
73		Issue for Planning
74		Issue for Planning
75		Issue for Planning
76		Issue for Planning
77		Issue for Planning
78		Issue for Planning
79		Issue for Planning
80		Issue for Planning
81		Issue for Planning
82		Issue for Planning
83		Issue for Planning
84		Issue for Planning
85		Issue for Planning
86		Issue for Planning
87		Issue for Planning
88		Issue for Planning
89		Issue for Planning
90		Issue for Planning
91		Issue for Planning
92		Issue for Planning
93		Issue for Planning
94		Issue for Planning
95		Issue for Planning
96		Issue for Planning
97		Issue for Planning
98		Issue for Planning
99		Issue for Planning
100		Issue for Planning



OXFORDARCHITECTS  
 100, 101, 102, 103, 104, 105, 106, 107, 108, 109, 110, 111, 112, 113, 114, 115, 116, 117, 118, 119, 120, 121, 122, 123, 124, 125, 126, 127, 128, 129, 130, 131, 132, 133, 134, 135, 136, 137, 138, 139, 140, 141, 142, 143, 144, 145, 146, 147, 148, 149, 150, 151, 152, 153, 154, 155, 156, 157, 158, 159, 160, 161, 162, 163, 164, 165, 166, 167, 168, 169, 170, 171, 172, 173, 174, 175, 176, 177, 178, 179, 180, 181, 182, 183, 184, 185, 186, 187, 188, 189, 190, 191, 192, 193, 194, 195, 196, 197, 198, 199, 200, 201, 202, 203, 204, 205, 206, 207, 208, 209, 210, 211, 212, 213, 214, 215, 216, 217, 218, 219, 220, 221, 222, 223, 224, 225, 226, 227, 228, 229, 230, 231, 232, 233, 234, 235, 236, 237, 238, 239, 240, 241, 242, 243, 244, 245, 246, 247, 248, 249, 250, 251, 252, 253, 254, 255, 256, 257, 258, 259, 260, 261, 262, 263, 264, 265, 266, 267, 268, 269, 270, 271, 272, 273, 274, 275, 276, 277, 278, 279, 280, 281, 282, 283, 284, 285, 286, 287, 288, 289, 290, 291, 292, 293, 294, 295, 296, 297, 298, 299, 300, 301, 302, 303, 304, 305, 306, 307, 308, 309, 310, 311, 312, 313, 314, 315, 316, 317, 318, 319, 320, 321, 322, 323, 324, 325, 326, 327, 328, 329, 330, 331, 332, 333, 334, 335, 336, 337, 338, 339, 340, 341, 342, 343, 344, 345, 346, 347, 348, 349, 350, 351, 352, 353, 354, 355, 356, 357, 358, 359, 360, 361, 362, 363, 364, 365, 366, 367, 368, 369, 370, 371, 372, 373, 374, 375, 376, 377, 378, 379, 380, 381, 382, 383, 384, 385, 386, 387, 388, 389, 390, 391, 392, 393, 394, 395, 396, 397, 398, 399, 400, 401, 402, 403, 404, 405, 406, 407, 408, 409, 410, 411, 412, 413, 414, 415, 416, 417, 418, 419, 420, 421, 422, 423, 424, 425, 426, 427, 428, 429, 430, 431, 432, 433, 434, 435, 436, 437, 438, 439, 440, 441, 442, 443, 444, 445, 446, 447, 448, 449, 450, 451, 452, 453, 454, 455, 456, 457, 458, 459, 460, 461, 462, 463, 464, 465, 466, 467, 468, 469, 470, 471, 472, 473, 474, 475, 476, 477, 478, 479, 480, 481, 482, 483, 484, 485, 486, 487, 488, 489, 490, 491, 492, 493, 494, 495, 496, 497, 498, 499, 500, 501, 502, 503, 504, 505, 506, 507, 508, 509, 510, 511, 512, 513, 514, 515, 516, 517, 518, 519, 520, 521, 522, 523, 524, 525, 526, 527, 528, 529, 530, 531, 532, 533, 534, 535, 536, 537, 538, 539, 540, 541, 542, 543, 544, 545, 546, 547, 548, 549, 550, 551, 552, 553, 554, 555, 556, 557, 558, 559, 560, 561, 562, 563, 564, 565, 566, 567, 568, 569, 570, 571, 572, 573, 574, 575, 576, 577, 578, 579, 580, 581, 582, 583, 584, 585, 586, 587, 588, 589, 590, 591, 592, 593, 594, 595, 596, 597, 598, 599, 600, 601, 602, 603, 604, 605, 606, 607, 608, 609, 610, 611, 612, 613, 614, 615, 616, 617, 618, 619, 620, 621, 622, 623, 624, 625, 626, 627, 628, 629, 630, 631, 632, 633, 634, 635, 636, 637, 638, 639, 640, 641, 642, 643, 644, 645, 646, 647, 648, 649, 650, 651, 652, 653, 654, 655, 656, 657, 658, 659, 660, 661, 662, 663, 664, 665, 666, 667, 668, 669, 670, 671, 672, 673, 674, 675, 676, 677, 678, 679, 680, 681, 682, 683, 684, 685, 686, 687, 688, 689, 690, 691, 692, 693, 694, 695, 696, 697, 698, 699, 700, 701, 702, 703, 704, 705, 706, 707, 708, 709, 710, 711, 712, 713, 714, 715, 716, 717, 718, 719, 720, 721, 722, 723, 724, 725, 726, 727, 728, 729, 730, 731, 732, 733, 734, 735, 736, 737, 738, 739, 740, 741, 742, 743, 744, 745, 746, 747, 748, 749, 750, 751, 752, 753, 754, 755, 756, 757, 758, 759, 760, 761, 762, 763, 764, 765, 766, 767, 768, 769, 770, 771, 772, 773, 774, 775, 776, 777, 778, 779, 780, 781, 782, 783, 784, 785, 786, 787, 788, 789, 790, 791, 792, 793, 794, 795, 796, 797, 798, 799, 800, 801, 802, 803, 804, 805, 806, 807, 808, 809, 810, 811, 812, 813, 814, 815, 816, 817, 818, 819, 820, 821, 822, 823, 824, 825, 826, 827, 828, 829, 830, 831, 832, 833, 834, 835, 836, 837, 838, 839, 840, 841, 842, 843, 844, 845, 846, 847, 848, 849, 850, 851, 852, 853, 854, 855, 856, 857, 858, 859, 860, 861, 862, 863, 864, 865, 866, 867, 868, 869, 870, 871, 872, 873, 874, 875, 876, 877, 878, 879, 880, 881, 882, 883, 884, 885, 886, 887, 888, 889, 890, 891, 892, 893, 894, 895, 896, 897, 898, 899, 900, 901, 902, 903, 904, 905, 906, 907, 908, 909, 910, 911, 912, 913, 914, 915, 916, 917, 918, 919, 920, 921, 922, 923, 924, 925, 926, 927, 928, 929, 930, 931, 932, 933, 934, 935, 936, 937, 938, 939, 940, 941, 942, 943, 944, 945, 946, 947, 948, 949, 950, 951, 952, 953, 954, 955, 956, 957, 958, 959, 960, 961, 962, 963, 964, 965, 966, 967, 968, 969, 970, 971, 972, 973, 974, 975, 976, 977, 978, 979, 980, 981, 982, 983, 984, 985, 986, 987, 988, 989, 990, 991, 992, 993, 994, 995, 996, 997, 998, 999, 1000



48

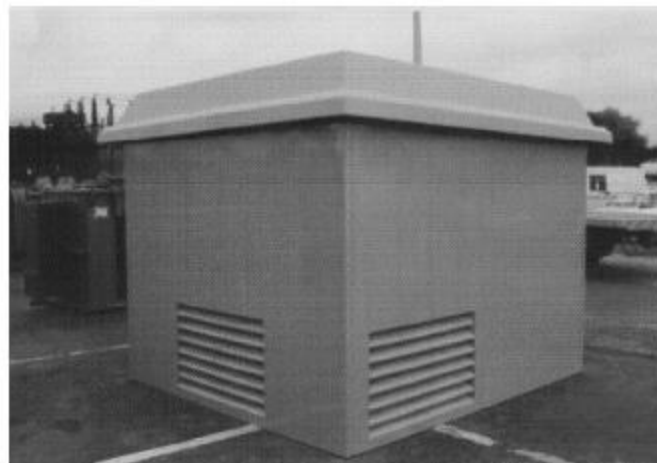
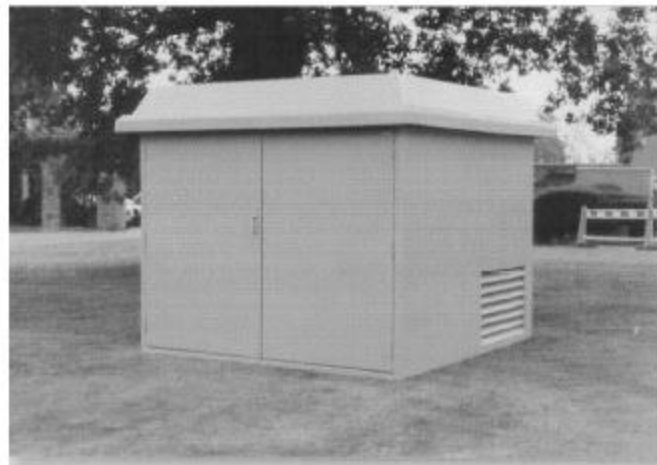


# Temporary Sub Station



0 5m

PROPOSED PLAN



Rev. Description		
Rev.	Date	By
Author	Drawn	Date
CW	AW	MAY 2014
Scale		
PLANNING		
Scale		
1:100 @ A3		
Project		
New Richards Building University of Oxford		
Title		
Proposed sub-station Plan and elevations		
Job No.	Drawn No.	Sheet No.
14096	016	A



OXFORDARCHITECTS  
Studio Office, 4 Bessy Hill, Oxford, OX1 3BS  
Tel: 01865 734465 Email: info@oxfordarchitects.com